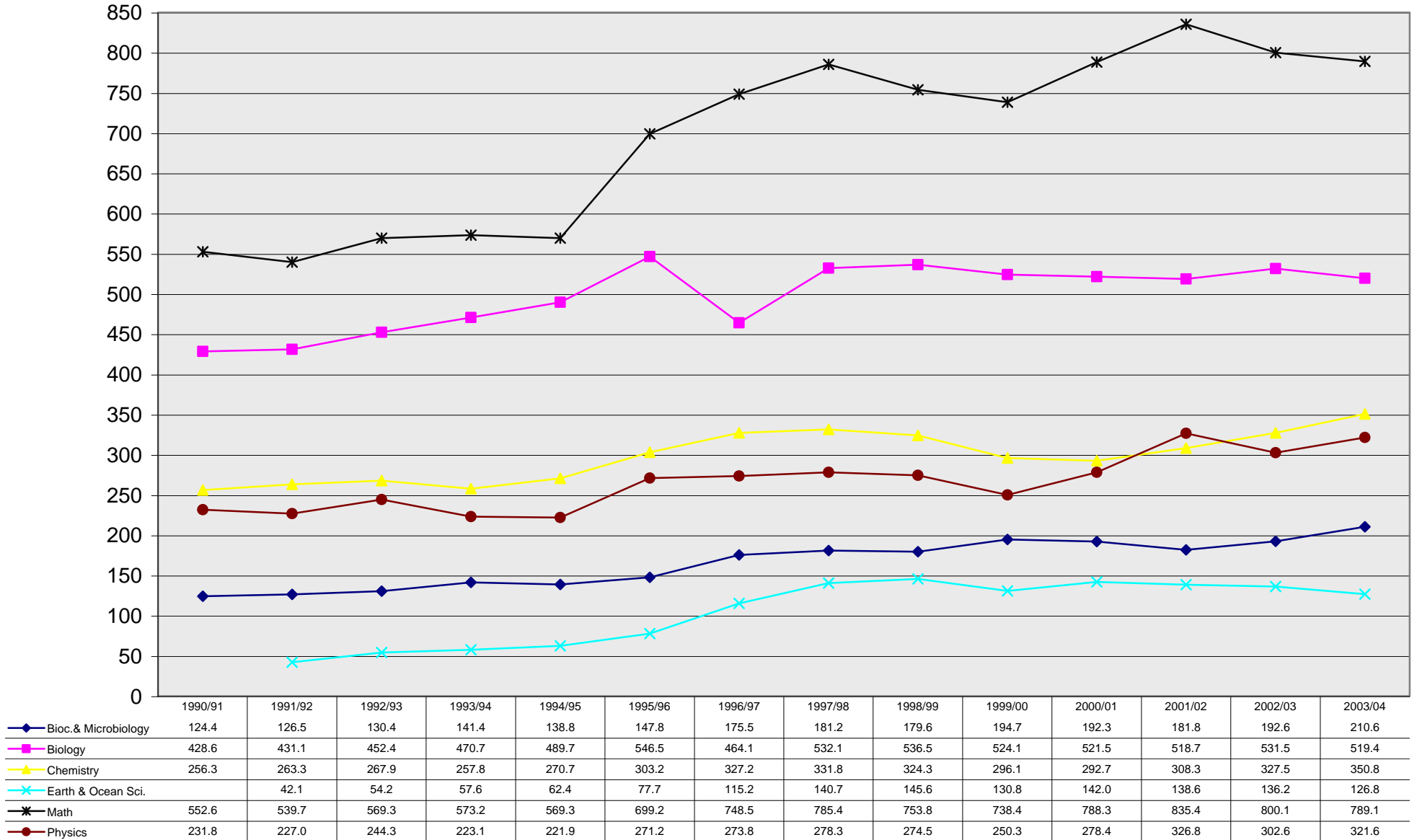


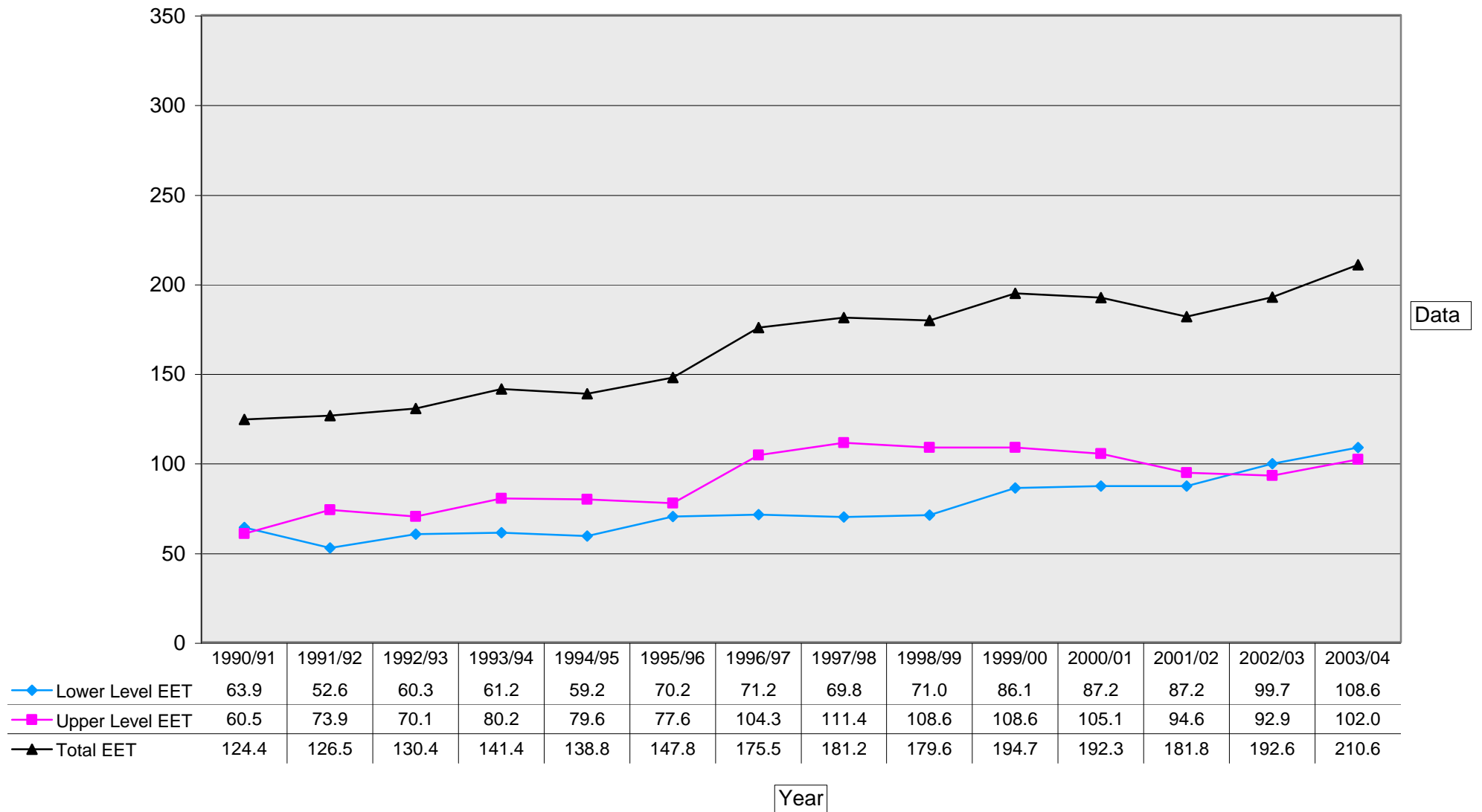
Annualized Undergraduate Equivalent Enrolments Taught (EET) - Science



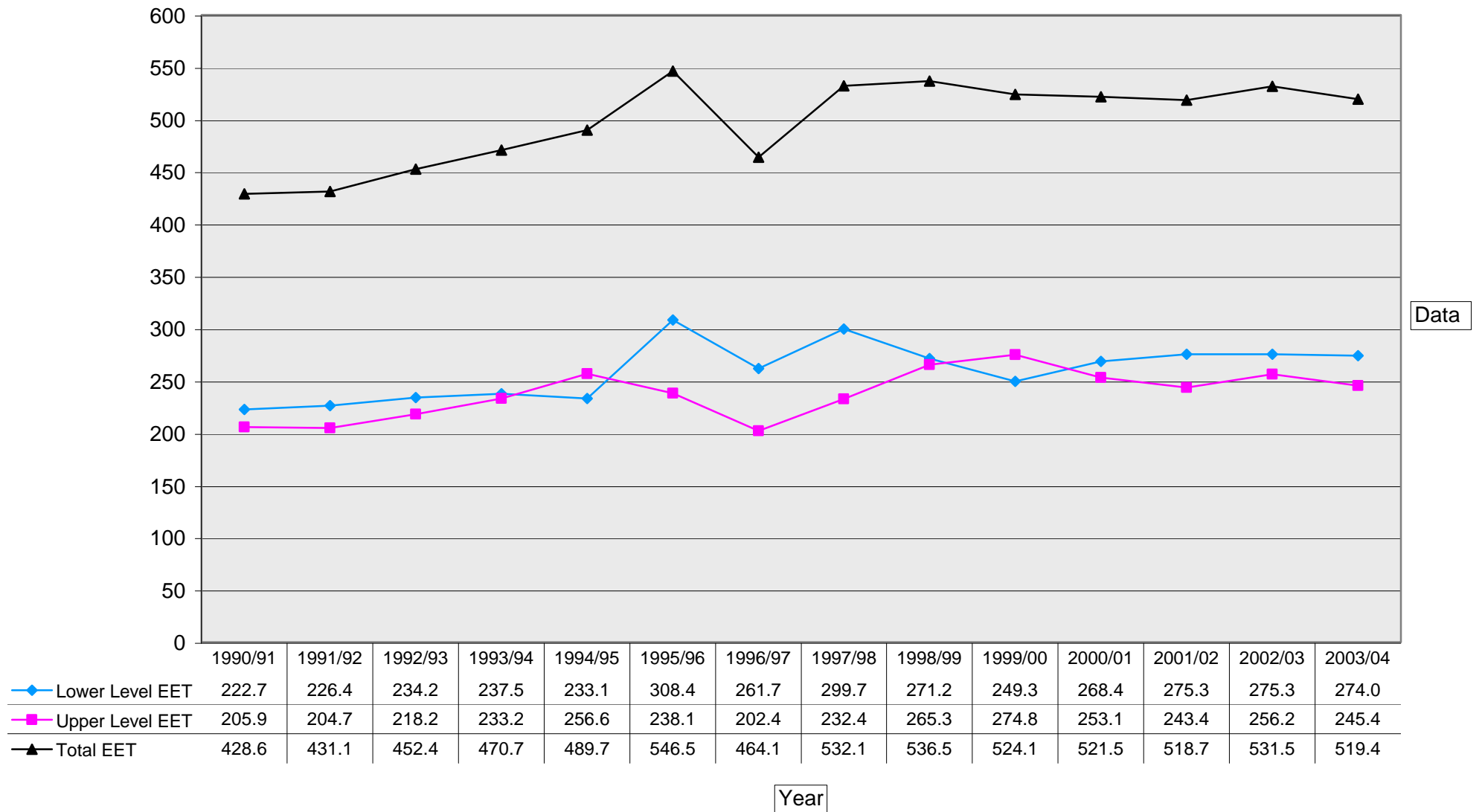
Source: ClassPops (ARAI Table 1)
University of Victoria

Institutional Planning & Analysis
March 4, 2004

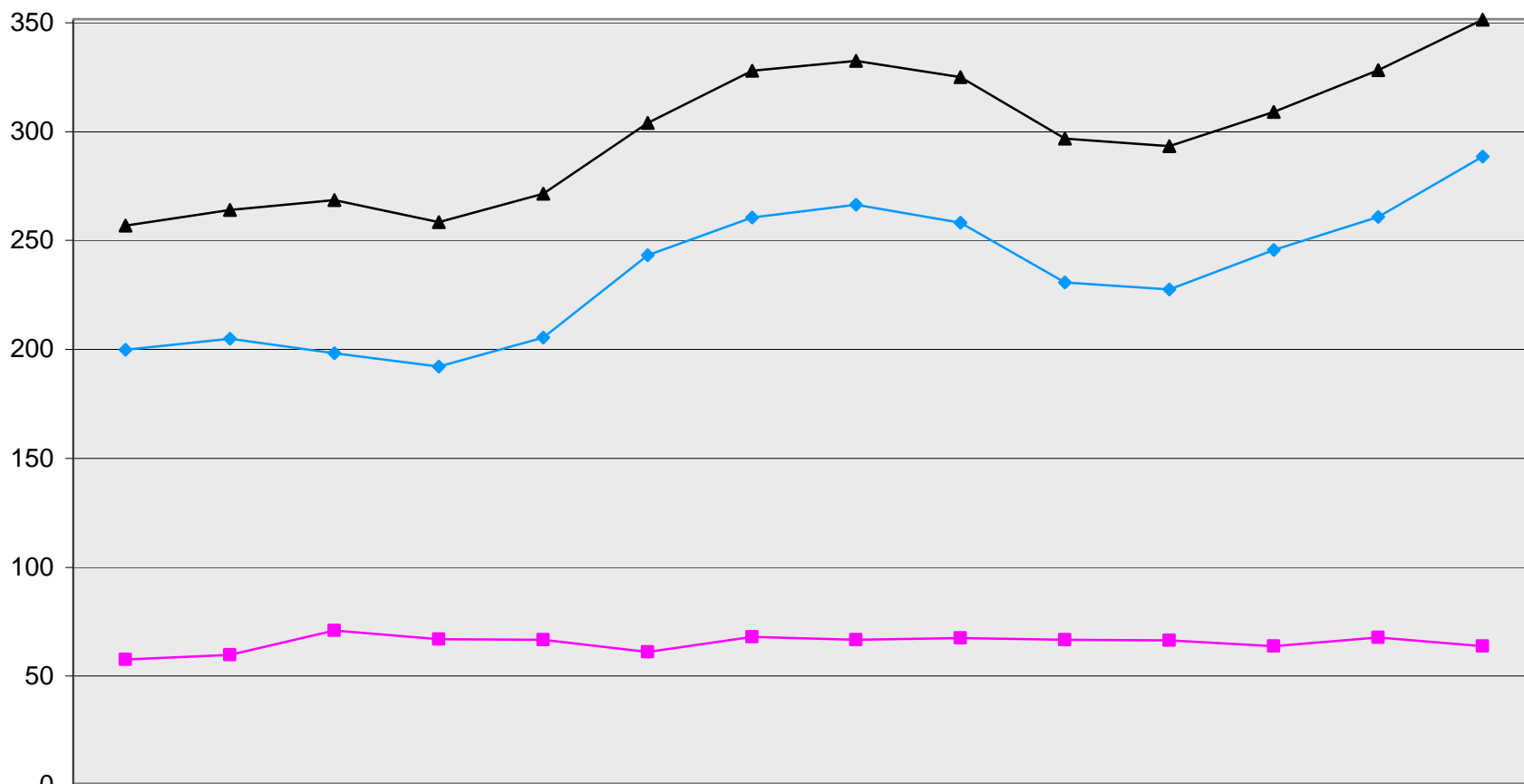
Annualized Equivalent Enrolments Taught (EET)



Annualized Equivalent Enrolments Taught (EET)



Annualized Equivalent Enrolments Taught (EET)

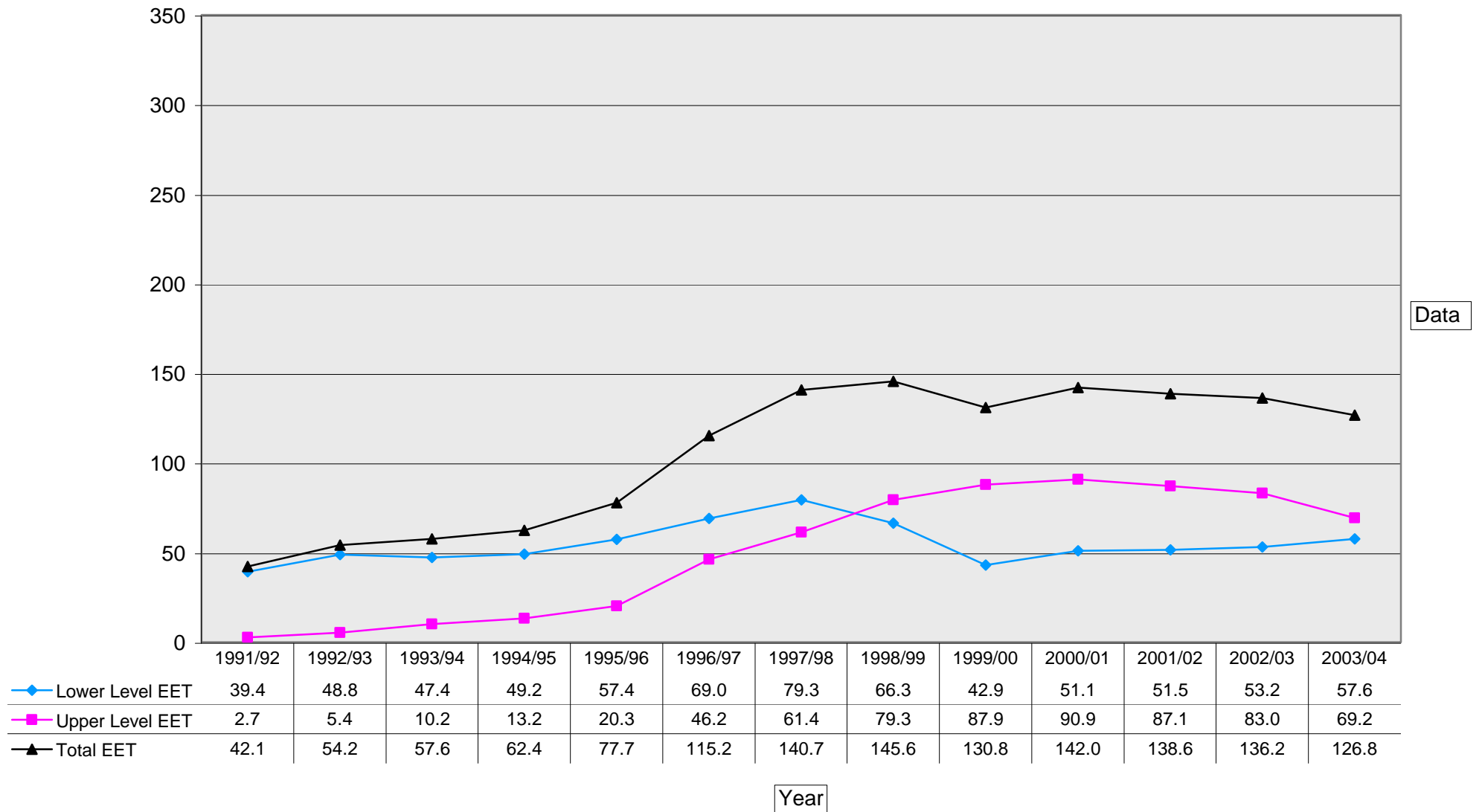


Data

	1990/91	1991/92	1992/93	1993/94	1994/95	1995/96	1996/97	1997/98	1998/99	1999/00	2000/01	2001/02	2002/03	2003/04
◆ Lower Level EET	199.2	204.3	197.6	191.5	204.7	242.7	259.9	265.8	257.4	230.0	227.0	245.1	260.3	287.8
■ Upper Level EET	57.1	59.0	70.3	66.3	66.0	60.5	67.3	66.0	66.9	66.1	65.7	63.2	67.2	63.0
▲ Total EET	256.3	263.3	267.9	257.8	270.7	303.2	327.2	331.8	324.3	296.1	292.7	308.3	327.5	350.8

Year

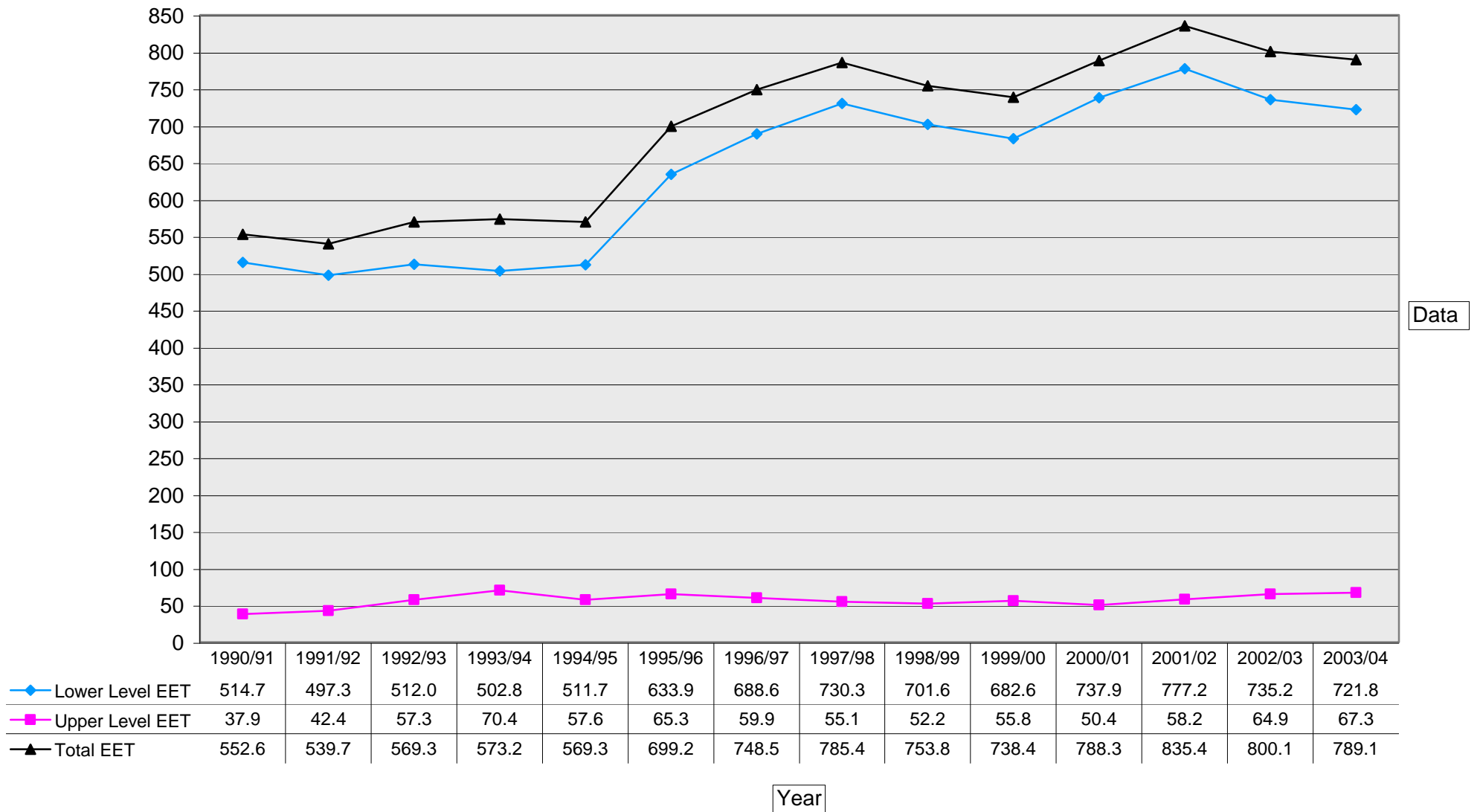
Annualized Equivalent Enrolments Taught (EET)



Source: ClassPops (ARAI - Table 1)
University of Victoria

Institutional Planning & Analysis
March 5, 2004

Annualized Equivalent Enrolments Taught (EET)



Annualized Equivalent Enrolments Taught (EET)

